

Key Events



Ilkley Summer Festival, August

August brings the Ilkley Summer Festival and a month of entertainment, live music, family events and a continental market.



Ilkley Literature Festival, October

In October celebrities from the worlds of entertainment and literature descend on Ilkley for the Ilkley Literature Festival for two weeks of authors' events, readings, performances and workshops.



Ilkley Complementary Medicine Festival, March and October

The Ilkley Complementary Medicine Festival is the UK's premier festival promoting natural remedies & related products. Established in 1988, the twice yearly Complementary Medicine Festival attracts exhibitors and practitioners from all over the country.

Days out In Surrounding Areas

Yorkshire Dales National Park

The Yorkshire Dales National Park is unspoilt and breathtaking, full of picturesque towns and villages. Join walkers, cyclists and horse-riders on challenging trails and gentle pathways criss-crossing 1,600 sq km of beautiful terrain.

If you'd rather take things at a slower pace then take a stroll around some of the Park's pretty villages which are full of independent shops, cafes, traditional pubs and restaurants. Yorkshiredales.org.uk

Saltaire

Explore Saltaire a UNESCO World Heritage Site due to its preservation as a model Victorian industrial village. Sir Titus Salt built the village to house his millworkers and the centre of the village is the imposing Salts Mill. Salts Mill is now home to one of the largest collections of David Hockney's work as well as interesting shops, cafes and restaurants. Once you've explored the mill visit the Grade 1 listed United Reformed Church or take a stroll along the Leeds Liverpool Canal. The village also has many independent shops, cafes and restaurants.

Visitsaltaire.com

Brontë Country

Haworth, a small village in the Pennines was once home to the famous literary family the Brontës and their home is now the Brontë Parsonage Museum. The Brontë Parsonage Museum is one of many attractions in Haworth. Take a ride on one of the magnificent steam trains on the Keighley & Worth Valley Railway or visit East Riddlesden Hall a 17th Century merchant's house and National Trust property. Throughout the year there are also lots of events in Haworth and Keighley including the popular 1940s Weekend and Victorian Christmas events.

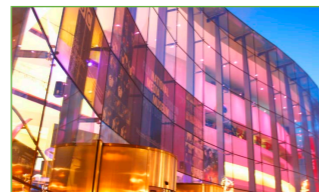
Visitbrontecountry.com

Bradford

Recently titled a UNESCO City of Film, Bradford is a thriving cultural destination with a packed events calendar, award-winning museums and impressive theatres. A must-see is the National Media Museum, a free museum devoted to film, photography, TV, radio and the web. The museum also has the IMAX cinema and hosts regular film festivals throughout the year. Visitbradford.com

See www.visitilkley.com for full events listings and more details.

- www.bradfordmuseums.org
- www.saltsmill.org.uk
- www.visitbrontecountry.com
- www.boltonabbey.com
- www.visitsaltaire.com
- www.yorkshiredales.org.uk



ILKLEY & WHARFEDALE
Balht 'at Country

Visit Ilkley

Things to do in Ilkley & Wharfedale



Enjoy the best...

of what life has to offer in picturesque and genteel Ilkley. Take pleasure in the beautiful countryside, soak up the town's history, enjoy fine food and wine, relaxed cafes and bars and comfortable accommodation.

Visit us online now for more information, offers and to book accommodation!

visit www.visitilkley.com

History, Heritage and Culture

Manor House

The Manor House is one of Ilkley's oldest buildings and is now an attractive museum and art gallery. On the ground floor visitors are given a glimpse into Ilkley's past while the first floor galleries provide the venue for a regularly changing programme of temporary exhibitions. Open: Tue 1pm - 5pm, Wed - Sat 11am - 5pm, Sunday 1pm - 4pm.



Roman remains at Manor House

While being a major exhibit in itself, the Manor House also stands on the remains of the Roman fort of Olicana. Only a short section of defensive wall remains exposed at the back of the building, but Roman artefacts from the fort and surrounding area are on permanent display inside the Manor House, together with prehistoric artefacts and information about the development of Ilkley as a Victorian spa town.

White Wells

White Wells was instrumental in establishing Ilkley as a spa town. A number of large hydros were built in the Ilkley area during the 19th century where people could come to "take the waters", believing all manner of ailments could be cured. Charles Darwin visited Ilkley in 1859 and is believed to have "taken the waters" at White Wells. Modern day visitors can still use the plunge bath on New Year's Day. Open: 10am - 5pm or when the flags are flying.

Family Fun

Ilkley Lido

Take the plunge at Ilkley Lido, the only lido in Yorkshire. Soak up the seaside atmosphere, enjoy a picnic in the tranquil setting and take in the fantastic views over Ilkley Moor. Café, tennis courts, putting green and bowls also available. Open Late May - early September.



Ilkley Toy Museum

The Toy Museum has many exhibits including dolls, dolls houses, teddy bears, tin plate toys, lead figures and a selection of games together with wooden and paper toys. Items in the collection date from 350 BC to the present day. Open Sat - Sun 12pm - 4pm.



Embsay & Bolton Abbey Steam Railway

The Embsay & Bolton Abbey Steam Railway runs 4 miles between the award winning station at Bolton Abbey and Embsay station built in 1988. Most trains are hauled by magnificently restored steam tank engines, the oldest one dating back to 1908. Steam trains run every Sunday throughout the year and up to 7 days a week in summer. Many special events are held each year.



The Great Outdoors

Walkers are Welcome

Get outdoors and enjoy Ilkley's beautiful countryside. Ilkley has been named a Walkers are Welcome town due to its walks for all abilities, well maintained pathways and walker friendly businesses.

Ilkley Moor

Within ten minutes walk of Ilkley Town centre you can be walking on Ilkley Moor one of Yorkshire's most famous landscapes thanks to the folk song 'On Ilkla Moor Baht 'at'. There are many different walking routes to enjoy on the moor, as well as the magnificent views of Ilkley and the Dales. Look out for the pre-historic carved rocks and the abundance of interesting flora and fauna.



Eating Out, Theatre and Shopping

Bettys Café Tea Rooms

Bettys Café Tea Rooms on Ilkley's tree lined Grove is the perfect place to refuel and relax. Visitors travel from far and wide to sample Bettys' Swiss-Yorkshire cooking. Make sure you have a Fat Rascal, a Yorkshire speciality, with your coffee.

Restaurants

Ilkley has a reputation for the number and quality of its restaurants. For a special treat reserve a table at the famous Box Tree, a Michelin starred restaurant. Other places to try include Martha & Vincent, Emporio Italia and The Farsyde. There's also plenty of pubs and bars in the town.



Theatre

Check out what's on at Ilkley's Playhouse or the wonderful King's Hall and Winter Gardens opposite the station, where you'll find a massive range of shows, performances and festivals for your entertainment.

There's also a great range of theatre in nearby Leeds including the Grand Theatre Royal and the West Yorkshire Playhouse and the Alhambra Theatre and St George's Hall in Bradford. Choose from the best in touring West End shows, contemporary theatre and live music.



Shopping

Ilkley is a great place to shop. Look out for Cakewalk which sells vintage items alongside art and handmade work. Opulent Designs is also a treasure trove of gifts. The Grove Bookshop stocks an interesting range of titles and there are plenty of high street names including Laura Ashley.



Suggested Walks

Cow and Calf Rocks via White Wells.

This short walk takes in various Ilkley landmarks including White Wells which was once a spa in the 19th century where people came to "take the waters". It's now a café which is open when the flags are flying. Fantastic views can also be admired from the Cow and Calf rocks and if you have time enjoy a drink at the Cow and Calf Inn.



Length and breadth of Ilkley Moor

There are many waling routes that include Ilkley Moor but a great way to experience the flora and fauna is to walk the length and breadth of the moor. Look out for the prehistoric rocks and the Red Grouse.

Self guided routes for these walks and more are available from Ilkley Visitor Information Centre or download our Walking Guide from visitilkley.com.

The River Wharfe, Riverside Gardens and Middleton Woods

A lovely walk is along the River Wharfe, via Middleton Woods and eventually finishing at Riverside Gardens. Relax and get away from it all and enjoy the peace and quiet. The Ilkley Riverside Hotel has a good public bar for drinks and meals and is near the end of the route.

